



UNIVERSITY
of
GREENWICH

Study Abroad

at the University of Greenwich



Contents

Why study abroad?	1
Why study abroad at the University of Greenwich?	2
The university.....	4
Our campuses	6
Accommodation	12
London life	14
Student life	16
Planning your programme.....	18
Your application	22
Regulations and policies.....	24
Further information and feedback	24





Why study abroad?

It has never been more true to say that life's riches are on your doorstep and are yours for the taking. Studying abroad offers you the opportunity to experience, first-hand, all that's on offer.

Study abroad and you will make lifelong friends, gain insight into a new culture and become a truly global citizen. You will learn to deal successfully with situations outside your comfort zone and, as a result, enhance your decision-making capacity and become a more confident, open-minded individual.

You will also gain an exciting new perspective on your studies. You will find that the whole experience enhances your CV and gives you a vital competitive edge when looking for jobs. You will take a journey of self-discovery, personal reflection and cultural appreciation, and you'll gain some of your most memorable experiences. In short, studying abroad will equip you with the tools you need to successfully embark upon life after university.

Don't let this opportunity pass you by.

Why study abroad at the University of Greenwich?

Whether you are looking to fulfil major, minor or general education requirements during your time with us, you will earn academic credit that meets the degree requirements of your home institution.

At the same time, you will become part of the University of Greenwich's vibrant academic and student community and immerse yourself in British life and culture.

Student satisfaction

Choose the University of Greenwich and you will join the most satisfied students in London, as rated in the Sunday Times University Guide 2010.

Academic excellence

We offer an exciting and diverse portfolio of programmes. These are designed to the highest academic quality in close collaboration with industry and are informed by our world-class research and enterprise.



At Greenwich, we set high standards for teaching quality and provide professional training opportunities for all lecturers.

We also measure students' views on our services through our annual student satisfaction survey, and, if shortcomings are found, we address them.

Diversity

The university is proud of its diverse student body. People from more than 140 countries choose to study at Greenwich, and over 1 in 5 of our students come from outside the United Kingdom. Services for students with disabilities or who have dyslexia give support to more than 1,000. Many of our black and other ethnic-minority students participate in a mentoring scheme that pairs them with high-flyers in the City (London's financial centre) and elsewhere. Students benefit from a research environment where staff share expertise and specialist facilities.

The chance to be inspired

Not only are classes intellectually stimulating, they are also taught on campuses steeped in history; Greenwich Campus, for example, is part of the Old Royal Naval College, established by Royal Charter in 1694, and is at the centre of the Maritime Greenwich World Heritage Site.

Integration and immersion

You will gain an in-depth understanding of British society and culture by living and studying alongside British students, and you will be able to experience London, one of the world's great capital cities.

Dedicated Study Abroad staff

Our Study Abroad staff are here to help make this the experience of a lifetime. We will support you from your very first contact with the university through to ensuring that your academic transcript arrives with you in a timely fashion. We are your first port of call for any problems that might arise.



The university

The University of Greenwich traces its roots to 1890, when Britain's second polytechnic was opened near the Thames at Woolwich to teach practical and commercial skills to London workers. Today, the university remains true to its founding principles and offers a wide range of work-related courses.



Campuses

- **Avery Hill**, in the south-east London district of Eltham
- **Greenwich**, in the historic London borough
- **Medway**, in Chatham Maritime, Kent, some 35 miles from central London.

Schools

- Architecture & Construction
- The Business School
- Computing & Mathematical Sciences
- Education & Training
- Engineering
- Health & Social Care
- Humanities & Social Sciences
- Medway School of Pharmacy
- Science

Institutes

- Greenwich Maritime Institute
- Natural Resources Institute
- Urban Renaissance Institute

Research

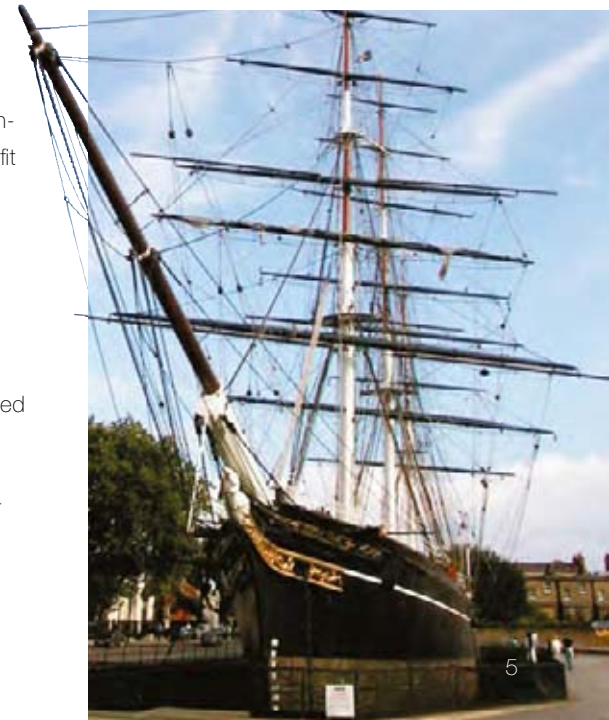
Our award-winning research effort focuses on making contributions to solving real-world problems and the advance of issues that have a direct bearing on business, regional and international communities and, ultimately, peoples' lives.

Our researchers have extensive links with industry and commerce, public-sector bodies and policy makers, supporting our objective to be a research-informed institution where students benefit from the experience of academic staff carrying out leading-edge research and consultancy with business.

Over the past three years, the University of Greenwich has generated almost £35 million in research, consultancy and related commercial activity.

Recent achievements include the award-winning Carbon8 project, which has developed a green way of dealing with contaminated land and industrial waste.

Through computer models created by the university, Victorian sailing ship the Cutty Sark has been given a virtual makeover. Fears were expressed that the world-famous craft, which was damaged by fire in 2007, may not survive a major restoration, so the work has been tested on a computer simulation.



Our campuses

Greenwich Campus

Greenwich Campus is the main hub for Study Abroad students.

The university's largest campus is centred on three baroque buildings designed by Sir Christopher Wren (the architect of London's St Paul's Cathedral) at the end of the 17th century. In a majestic setting on the banks of the River Thames, the campus has been described as "more breathtaking than the Versailles of Louis XIV".

The library has an extensive collection of books and journals, as well as language laboratories and a 200-PC computing

facility. Other computer facilities include specialist laboratories, a TV studio and editing suites. The campus also has a bookshop and a gallery showcasing the work of contemporary artists.

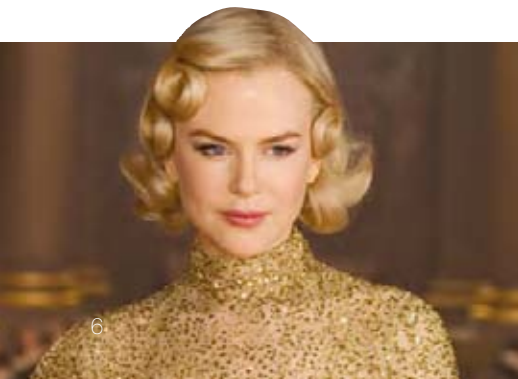
If you want to take a glimpse behind the scenes of a Hollywood blockbuster, Greenwich is an excellent place to start. Film makers flock to the Old Royal Naval College, seen recently in *The Golden Compass*, *The Wolf Man*, *Dorian Gray*, *Gulliver's Travels* and many other productions. While we can't guarantee you'll spot a star, hopes are high: Nicole Kidman, Keira Knightley, Owen Wilson, Jackie Chan and Hugh Grant have all filmed on site.

Greenwich town centre has a great atmosphere fostered by boutiques, markets, pubs, clubs and restaurants. Up the Creek, a comedy and cabaret club, offers up-and-coming names in stand-up and is a short walk from the campus.

The borough is steeped in history. East meets west on the Greenwich Meridian



line, which divides the hemispheres and marks longitude zero. The line runs through the courtyard of the 17th-century Royal Observatory and indicates the spot from which Greenwich Mean Time is calculated. Greenwich is home to the National Maritime Museum and one of London's finest Royal Parks. If you are feeling fit, you can climb the steep hill to the park's highest point, or you may prefer to join Greenwich Cyclists, which organises excursions for all abilities.

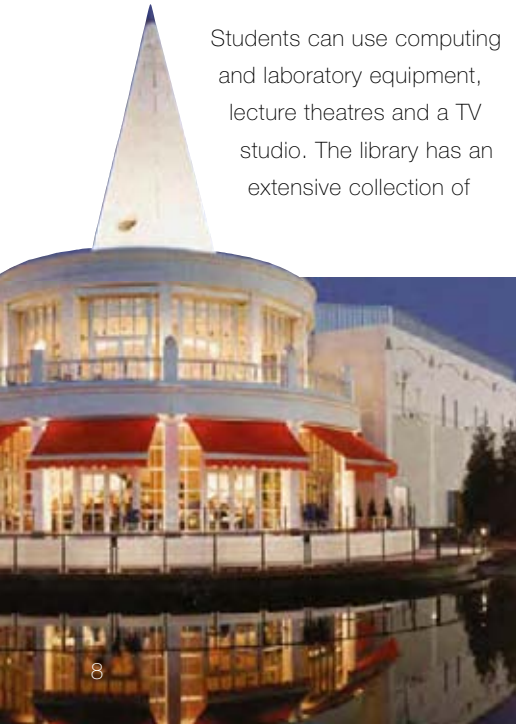




Avery Hill Campus

Avery Hill Campus, in the 86-acre Avery Hill Park in Eltham, south-east London, occupies two locations, Mansion Site and Southwood Site. Together they combine the style and grace of a Victorian mansion with the best of modern teaching, living and sporting facilities.

Students can use computing and laboratory equipment, lecture theatres and a TV studio. The library has an extensive collection of



books and journals, and its staff provide expert media support. The university bookshop offers a wide range of course texts and an online service.

Two new buildings have been built on the Southwood Site as part of a £14-million project to improve facilities. The new development includes a sports and teaching centre with a multipurpose sports hall, teaching space and a 220-seat lecture theatre. Four clinical skills laboratories which replicate hospital wards enable trainee health professionals to get real hands-on experience.

The borough of Eltham has many clubs, pubs and bars, as well as a variety of restaurants. Nearby is Bluewater, which has a 12-screen cinema and is one of the largest shopping destinations in Europe. The Valley ground of Charlton Athletic Football Club is only five miles away and can be reached by bus.





Medway Campus

Medway Campus, a former royal naval base, has benefited from £50 million in investment since 1996. Extensive new laboratories and research facilities have been opened, and the university has joined with other educational establishments to develop the campus as a major higher education centre in the region.

At the heart of the campus is the Drill Hall Library, a magnificent learning resource centre with an extensive collection of books and journals and over 400 computers. Pilkington Building, next door, has teaching facilities and is the base for the Universities at Medway Students' Association, which represents all students on site.

The modern workshops and equipment include a computer-aided design studio, a training dispensary for pharmacy students and specialist test facilities for the Wolfson Centre (part of the School of Engineering). The Centre for Sport & Exercise Sciences has the latest in 3D movement and force

analysis equipment, enabling researchers to help professional athletes improve technique and avoid injury.

The campus is based in Chatham Maritime, a rapidly developing part of the Medway Towns. The area includes Chatham's historic naval dockyard, a riverside pub and the Dockside Outlet Centre, which has good-value shops. Nearby is a cinema and

Dickens World, an attraction about author Charles Dickens. Rochester, a couple of miles to the south, is proud of its castle, cathedral, music concerts and festivals.

For sport, fans, the nearest football ground is Gillingham's Priestfield Stadium; Kent plays cricket at Tunbridge Wells and Canterbury; and the Invicta Dynamos play ice hockey at the Ice Bowl in Gillingham.







Accommodation

The University of Greenwich firmly believes that where you live, and in what type of housing, play an important part in student life.

Halls of residence

To help you to adapt to student life at the University of Greenwich, every effort will be made to accommodate you in one of our halls of residence.

Rooms are typically single en-suite study bedrooms in self-catering flats. You can expect to share a kitchen with six other students.

Study Abroad students will normally be housed in Greenwich. If you wish to be housed in one of our halls on Avery Hill or Medway Campus, please indicate this when you apply.

Further information about our halls can be found at www.gre.ac.uk/accommodation.

Private rented accommodation

If you would prefer to live in private rented accommodation, please contact our study

abroad co-ordinator at studyabroad@gre.ac.uk. Further information on private rented accommodation can also be found at www.gre.ac.uk/accommodation/private.



London life

London has an electrifying atmosphere and offers a wealth of exciting opportunities to anyone living and studying here.

The internationally recognised arts and heritage scene offers some of the finest in modern and classical art and architecture, world-famous orchestras and dance companies, opera and cutting-edge gigs. London also boasts some of the world's best concert venues, such as the O2 and Royal Albert Hall.

Visitors can enjoy day trips to Buckingham Palace, Piccadilly Circus, Harrods or the Tower of London, or nights out at restaurants or clubs, or at the theatre in London's West End.

Cafés provide the perfect spot to enjoy coffee with friends while gastro pubs often offer an excellent Sunday lunch. Alternatively, you may prefer to unwind in a traditional London pub or to watch a match at a sports bar.

And if you don't want to spend much money, why not relax for free in one of London's parks or enjoy the sights and sounds of Leicester Square?

Central London is only a short journey away, so London life is on your doorstep.





Student life

The University of Greenwich believes that education is about social interaction as well as academic achievement, so we provide an extensive range of services and facilities to help you make the most of your social life.

An essential part of your student experience comes from membership of the Students' Union (<http://suug.co.uk>). As a Study Abroad student, you will automatically become a union member. We would encourage you to use its services to the full as it is a great way to meet fellow students.

The union runs a number of on-campus bars and shops, and administers a wide range of university sports, which include American football, football, rugby and tennis. Social societies, such as the Drama Society and Christian Union, also operate through the union.



Cooper Building, a few minutes' walk from Greenwich Campus, is the union's headquarters. It houses a shop and the student bar, Bar Latitude. This offers food and drink, and hosts events such as student society fundraisers. Students can also eat and drink on campus at two coffee bars, a restaurant and a café/canteen.

Avery Hill's Student Village, centrally located on Southwood Site, offers a range of facilities in one convenient place, including accommodation, a general shop, a launderette and a social centre, the Dome. The Dome houses a state-of-the-art gym with resistance and cardiovascular equipment and a restaurant and



coffee bar. Mansion Site has a café, a canteen and general shop.

The campus has amenities for a range of sports, including tennis, rugby, football and cricket; Sparrows Farm, the university's sports and leisure centre, has a dance and aerobics studio as well as a bar. Nearby is the Airdome, an indoor football facility shared with Charlton Athletic Football Club.

Medway Campus boasts a mix of social and leisure facilities, including a restaurant in Pembroke Building and the Venue café in Pilkington Building. Sports facilities include a sports hall, a gym with cardiovascular and weights rooms, and outdoor tennis courts. The on-campus bar offers meals and traditional pub games. The campus also has a general shop.

More ways of filling your social life can be found in *The Buzz*, your lifestyle guide to the University of Greenwich. You can download a copy at www.gre.ac.uk/study/lifestyle.

The university has also developed a Study Abroad Social Programme. Participating in this is an excellent way to meet other international students and experience some of the cultural riches the UK has to offer.



Planning your programme

The Study Abroad programme provides international and EU students with the opportunity to study at Greenwich for a semester or academic year.

You will arrive for Orientation the week prior to the beginning of class. During the semester, as well as taking part in normal University of Greenwich activities, you will also have the option to sign up to the Study Abroad and Exchange Student Social Programme.

Programme dates can be found online at www.gre.ac.uk/studyabroad.

The number and combination of courses you can take depends on whether you study with us for a semester or a full academic year, as shown by the table below.

Academic period	Number of courses to be taken	UK credits	US equivalent credits	ECTS
Semester	4 x 15-credit courses	60	16	30
Academic year	8 x 15-credit courses	120	32	60
	OR 4 x 30-credit courses	120	32	60
	OR a combination of 15- and 30-credit courses	120	32	60

Programme pathways

We offer courses from a wide range of academic disciplines.

In order to match your programme to your interests and career aspirations (and so you can study the relevant number of courses), the University of Greenwich has developed a variety of diverse and flexible academic pathways.

You can select four courses from any of the subject areas listed under the pathways:

Architecture Pathway

- Architecture and Urbanism
- Communication Media for Design
- Construction Management
- Landscape and Garden Design
- Property, Housing and Regeneration.

Business Pathway

- Accounting
- Business Management
- Economics
- Events Management
- Finance
- General Business
- Human Resources
- International Business
- Marketing
- Management
- Public Relations
- Tourism.

Computing and Mathematical Sciences Pathway

- Computing and Software Engineering
- Digital Media and Entertainment Technologies
- Information Systems and Technology
- Mathematics
- Networking, Security, Mobile and Embedded Systems
- Statistics.

Engineering Pathway

- Civil Engineering
- Computer and Communications Engineering
- Engineering
- Engineering Systems.

General Health Pathway

- Health Promotion
- Public Health
- Sociology of Health.

Liberal Arts Pathway

- Art and Design
- Drama
- English
- Film Studies
- History
- Languages
- Media.

Social Sciences Pathway

- Criminology
- Geography

- Sociology
- Philosophy
- Politics and International Relations
- Psychology.

Science Pathway

- Biomedical science
- Biosciences
- Chemistry
- Nutrition
- Pre-medical
- Sports Science.

Internship Pathway

Students take the Internship Course and choose three courses from any discipline.

The Internship Course is a core element of the Internship Pathway and is suitable if you are looking to gain practical, hands-on experience in your chosen field.

The course offers you the chance to put your theoretical, academically gained knowledge into practice in a real-life work environment.

The course is worth 15 UK credits (equivalent to 4 US credits or 7.5 ECTS) and comprises three hours' classroom time per week and a work placement. The work placement will run for up to 20 hours per week for 10 weeks. Class time will focus on leadership skills and provide you with a chance to reflect upon your work placements and how to apply relevant theory and concepts to your role.

General Pathway

For maximum flexibility, you can choose all four courses from different academic disciplines.

We also offer a wide range of courses in Education. Please contact the Study Abroad & Exchange Co-ordinator directly for further information relating to these courses.

Course catalogue

The online Study Abroad course catalogue outlines all courses on offer to you. It is constantly being reviewed and updated. If

you cannot find a particular course that is related to your chosen pathway or a core course that you must take to fulfil your home degree requirements, please contact the Study Abroad & Exchange Co-ordinator, who will be more than happy to work with you individually.

You will be required to list your preferred courses when you apply. You must seek approval for specific courses from your home institution before commencing



studies at Greenwich. It is your responsibility to ensure that your home institution will accept the credit.

Please note that to be accepted on some courses at Greenwich you must successfully complete a prerequisite course equivalent at your home institution, as outlined in the course catalogue.

To view the course catalogue, log on to **www.gre.ac.uk/studyabroad**.

The academic year at Greenwich

For students studying the full degree at Greenwich, the academic year comprises three terms, with the majority of teaching taking place in Terms 1 and 2 and the assessment period taking place in Term 3.

Full-degree students study 120 UK credits (equivalent to 32 US credits or 60 ECTS) in one academic year. They take full-year 30-credit courses or term-long 15-credit courses, or a combination of both.

The Study Abroad academic year is as follows:

Semester 1 (equivalent to Term 1 only, mid-Sept to mid-Dec): Study Abroad students take four 15-credit courses, earning 60 UK credits (equivalent to 16 US credits or 30 ECTS). Study Abroad students complete their assessment prior to leaving.

Semester 2 (equivalent to Term 2 and 3, mid-Jan to end May): Study Abroad students take four 15-credit courses, earning 60 UK credits (equivalent to 16 US credits or 30 ECTS). Study Abroad students complete their assessment prior to leaving. Assessment is completed during the usual assessment period.

Full academic year (equivalent to Terms 1, 2 and 3): Students take either four 30-credit courses, eight 15-credit courses or a combination of 30-credit and 15-credit courses, making a total of 120 UK credits (equivalent to 32 US credits or 60 ECTS). Assessment is completed during the usual assessment period.

Pre-arrival and orientation

We will help you to prepare for living and studying in the UK. Approximately four weeks before your arrival, we will send you the first of a series of pre-arrival e-mails. These will introduce you further to London and the University of Greenwich and provide you with practical information to help you to settle in and make the most of your time with us.

Glossary of terms

At the University of Greenwich, courses are made up of a combination of lectures, seminars/tutorials, labs, practical work and independent study.

Course – a component part of a programme, with its own assessment and set of specifications indicating what the student should achieve.

Lectures – each course generally has one hour of lectures per week. Each lecture, which may be attended by up to 200 students, sets out the main course themes

You will be invited to attend the university's International Students' Orientation Programme, which takes place in the week prior to the commencement of studies. During the programme, you will meet people who will play a key role in your time at Greenwich and become familiar with the university's campuses, student life and academic rules and regulations. You will also finalise your academic timetable.

and ensures students cover course work at a steady, ongoing pace and are prepared for the more in-depth analysis of course material that takes place during tutorials and independent study. For many courses, lectures are followed by seminars.

Seminar – a teaching discussion group that is smaller than a lecture, with up to 30 students. Seminars expand on material introduced during the lecture.

Labs – small group classes taught using specialist equipment in laboratories.

Your application

Admissions requirements

- A minimum GPA of 2.8 on a 4.0 scale (or an equivalent score in a similar recognised system) for all courses except those in the Schools of Engineering, Architecture & Construction and Computing & Mathematical Sciences, which require a minimum GPA of 3.0.

You must also supply the following documents:

- A completed University of Greenwich Study Abroad application form
- A copy of your most recent home university transcript
- A photocopy of your passport
- Your personal statement
- An academic reference
- A portfolio, if required, for practical courses including design, production, media and architecture courses.



Programme costs

For current information on fees, including the deposit system, please go to **www.gre.ac.uk/studyabroad**.

All fees must be paid in full prior to commencement of the programme.

Students are permitted to withdraw from the programme.

A full refund will be made if students withdraw on or before the following dates:

- August 1 for Semester 1
- December 1 for Semester 2

If students withdraw after these dates but prior to arrival, all fees excluding the deposit will be refunded. No refunds will be made if students withdraw on or after arrival.

How to apply

You can apply to study at Greenwich as part of your home college or university degree by completing the application form, which can be downloaded at **www.gre.ac.uk/studyabroad**.

Please send the completed form to:

Study Abroad Co-ordinator
Room 063
Queen Mary Court
University of Greenwich
Old Royal Naval College
Park Row
London SE10 9LS
United Kingdom

The form should be accompanied by additional documents (see 'Admission requirements').

Alternatively, you may e-mail the form to studyabroad@gre.ac.uk and send the documents by post.

Applications (including all documents) should reach the Study Abroad Co-ordinator by the following dates:

- May 1 for a September start
- October 30 for a January start.

Visas and immigration

Our International Student Advice Service will provide you with full information regarding visa requirements. You can contact the team using an online form at **www.gre.ac.uk/students/isas/contacting-isas**.



Regulations and policies

Health and safety

The university is committed to providing a safe and healthy working environment for all our students. We recognise the importance of, and have made arrangements for, the following:

- Managing health and safety at all levels of the university
- Consulting with students and staff on health and safety matters
- Providing information and training in health and safety risks and precautionary measures
- Providing expert safety advice
- Conducting regular monitoring and reviewing of health and safety.

Other policies

The university has a race equality policy, an equal opportunities policy statement and a complaints policy. The Policy on Professional Relationships between Staff

and Students governs the staff/student relationship. You can find more information on our regulations and policies at www.gre.ac.uk/students/regs.

Further information and feedback

If you have any further questions or would like to make any suggestions as to how we can improve this brochure and the overall Study Abroad student experience, please do not hesitate to contact us.

E-mail: studyabroad@gre.ac.uk

Tel: +44 (0)20 8331 9225

University services and facilities described in this publication may be subject to change or discontinuation. The university is not responsible for the content of any websites operated by third parties that are listed in this publication.

Every effort has been made to ensure that this publication is as up to date as possible at the time of going to press. Some details, however, are liable to change.

Cover image: Maritime Greenwich World Heritage Site
Planetarium image on page 6: © National Maritime Museum







UNIVERSITY
of
GREENWICH

Study Abroad

Queen Mary Court
University of Greenwich
Old Royal Naval College
Park Row
London SE10 9LS
United Kingdom

E-mail: studyabroad@gre.ac.uk

Tel: +44 (0)20 8331 9225



This document is available
in other formats on request